

SUN



Homes-Extra

NEW HOMES & CONDOS

JULY 3 - 9, 2010

WWW.CALGARYSUN.COM/HOMESANDCONDOS



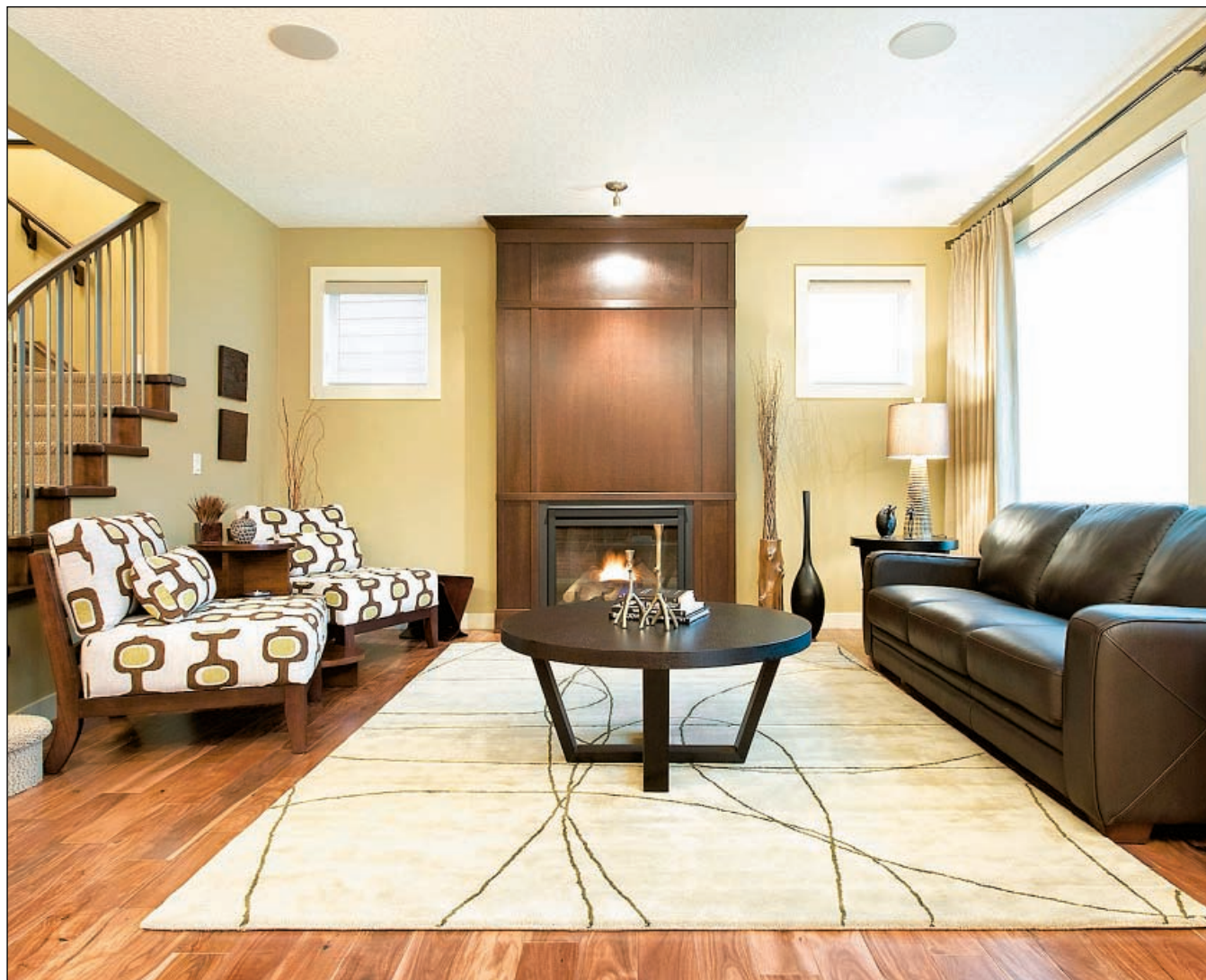
ON THE COVER

Albi Homes
The Madison

INSIDE

Feature: Genesis Land Development
Condo: Sage Hill Village

Photo Credit: Dustin Hoffert, DCPix Photography



DUSTIN HOFFERT/DCPIX PHOTOGRAPHY



"It's a family-oriented community - the Madison reflects this absolutely."



Albi Homes creates elegant refuge in Auburn Bay

Madison 'the ultimate family home'

Lauren Barr

CALGARY SUN

Combining sophistication with cozy cottage living, Albi Homes has created a refuge in Auburn Bay for city dwellers seeking an everyday get-away.

The Madison showhome is a model for family comfort, but offers elegant touches that underscore luxurious living.

"The Madison is what I call the ultimate family home," says Jason Mauro, vice president of sales and marketing for Albi Homes.

"It's definitely our most popular model in the city. It's open and it has that really grand estate home feel."

The open concept of the main floor revolves around a living space that is good for both family and entertaining.

The kitchen features granite countertops, stainless steel appliances and a large island with an eating bar.

A wine fridge is built into the island and the cherry chestnut cabinets reach to the ceiling.

Touches of drama create a feeling of opulence in the home, says Mauro.

"The flared staircase makes for emotion in the great room," he says.

Details throughout the home are also designed to create a cohesive feel.

"The fireplace is clad floor

to ceiling in the same wood as the cabinets in the kitchen, so it really ties the two rooms together," Mauro says.

Upstairs, there's room for a family to grow.

The master provides a lovely refuge from the day.

"For the master, we went over the top, but the effect is gorgeous," Mauro says.

"The closet is incredible, with shelving done in a dark wood and features including a pull-out tie rack and shoe storage."

The Madison is a two-storey, 2,705 sq. ft. three-bedroom layout with an option for a fourth.

The architecture of the home reflects the cottage-country character that permeates

Auburn Bay.

"The dark blue Hardie siding with cedar shakes gives that great cottage feeling," Mauro says.

"Auburn Bay is lakeside living at its best.

"The lake is right there in the summer so you can take the kids down to the beach. Even in the winter, outdoor living is still a part of the lifestyle, as the lake is groomed for skating."

The lakeside lifestyle is also convenient, with Deerfoot Tr. nearby, as well as schools, shopping and restaurants.

More than anything, it's a place to raise a family.

"It's a family-oriented community," Mauro says. "The Madison reflects this absolutely."

FAST FACTS

BUILDER: Albi Homes

AREA: Auburn Bay

DEVELOPER: Carma Developers

PRICE: Starting price for the Madison \$671,160

DIRECTIONS: From Deerfoot Tr. turn east on Seton Blvd. Turn left onto Auburn Bay Gate. At Auburn Bay Blvd, turn left and at Auburn Sound Manor, turn right.

HOURS: Monday to Thursday, 2 p.m. to 8 p.m., weekends and holidays, noon to 5 p.m.

CONTACT: www.albihomes.com or 403-252-5522